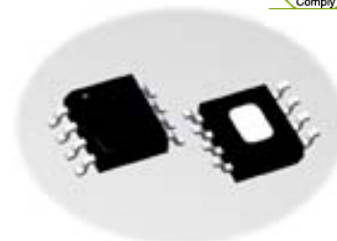


## Product Features

- Passive Integration on Silicon
- Low Insertion Loss
- High Isolation
- Solder Pad
- Low Cost
- Pb Free / RoHS Compliant

## Application

- Repeater
- Base Station
- RF Sub-Systems



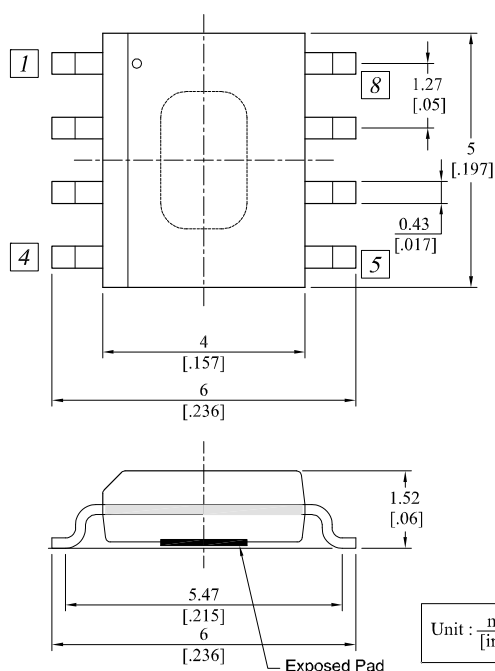
## Description

The CP Series is a monolithic directional coupler for low cost wireless applications.

## Specifications at 25 °C

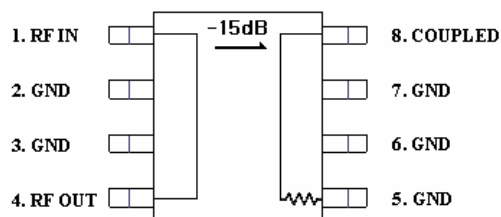
PARAMETER	Units	Min	Typ	Max
Frequency Range	MHz	3400		3700
Insertion Loss	dB		0.3	0.5
Input Return Loss	dB	10	15	
Output Return Loss	dB	10	15	
Coupling	dB	14	15	16
Coupling Port Return Loss	dB	10	13	
Isolation	dB	18	21	
Remarks	MHz	3500		

## Package Dimensions (Type: SOIC-8)

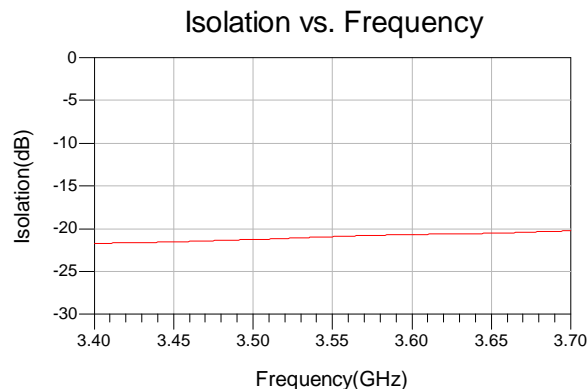
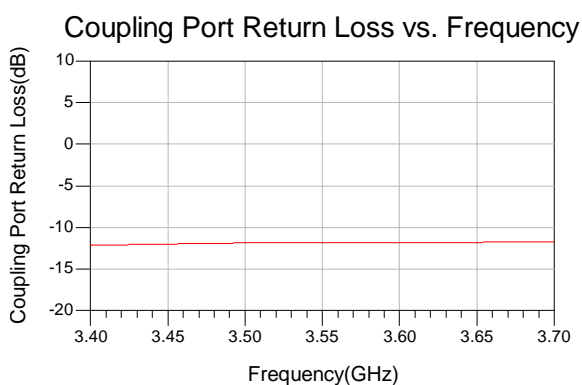
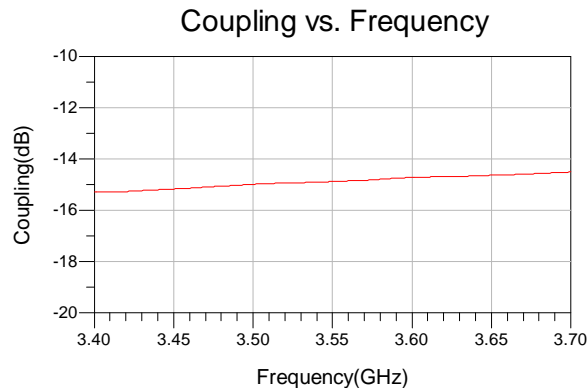
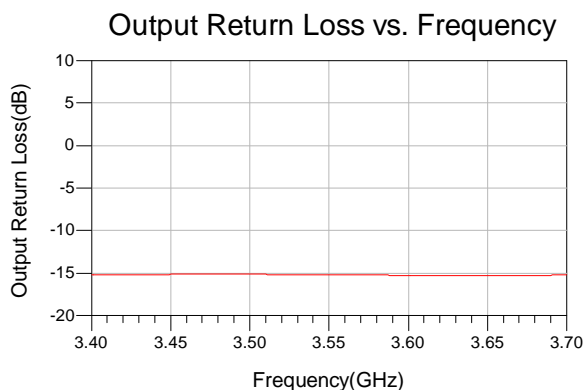
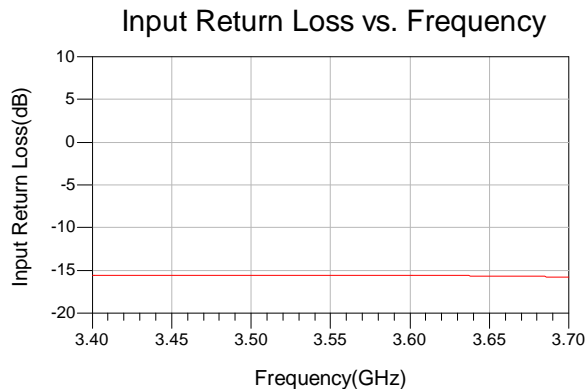
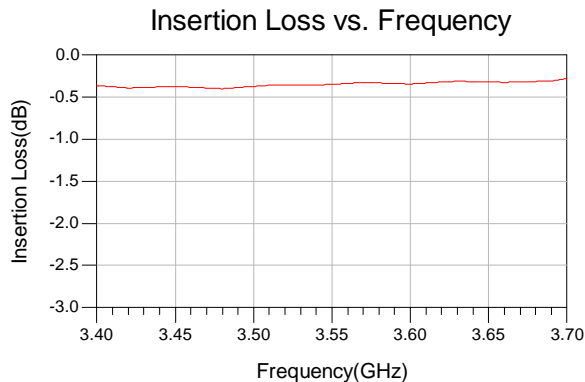


## Absolute Maximum Ratings

Parameter	Value
Input Power	2 W
Operating Temperature	-40 ~ +85 °C
Storage Temperature	-65 ~ + 150 °C



## Typical Performance Data at 25°C (SOIC-8 Package)



RFHIC Corporation (RFHIC) reserves the right to make changes to any products herein or to discontinue any product at any time without notice. RFHIC do not assume any liability for the suitability of its products for any particular purpose, and disclaims any and all liability, including without limitation consequential or incidental damages. The product specifications herein expressed have been carefully checked and are assumed to be reliable. However, RFHIC disclaims liability for inaccuracies and strongly recommends buyers to verify that the information they are using is current before placing purchase orders. RFHIC products are not intended for use in life support equipment or application where malfunction of the product can be expected to result in personal injury or death. Buyer uses or sells such products for any such unintended or unauthorized application, buyer shall indemnify, protect and hold RFHIC and its directors, officers, stockholders, employees, representatives and distributors harmless against any and all claims arising out of such use. RFHIC's liability under or arising out of damages, claims of whatsoever kind and nature which RFHIC products could cause shall be limited in amount to the net purchase price of the products sold to buyer by RFHIC.